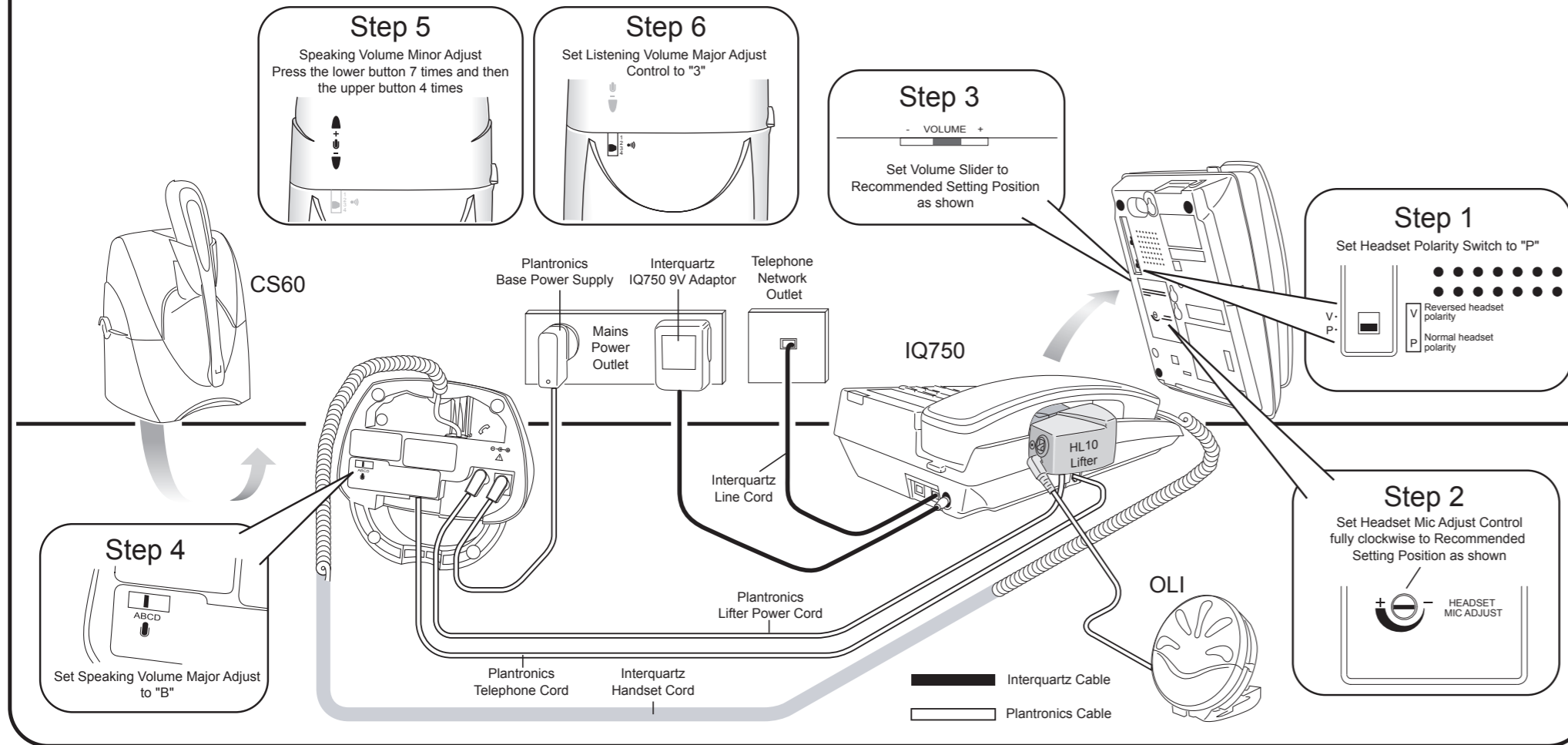
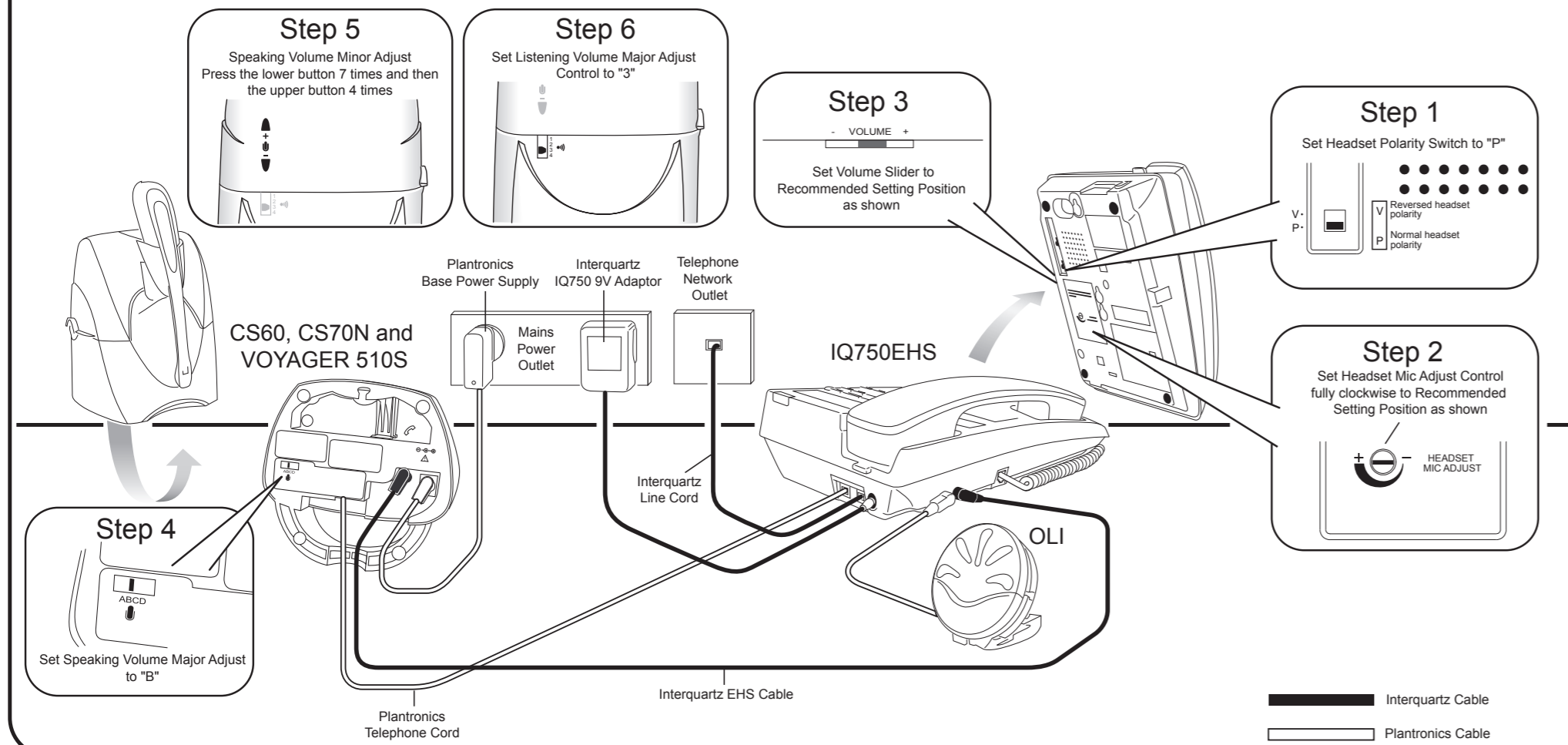




**Figure 1 - CS60 and Lifter Connection Diagram for IQ750**



**Figure 2 - CS60 and OLI Connection Diagram for IQ750EHS**



# MODEL IQ750 & IQ750EHS QUICK REFERENCE GUIDE

**Display**

Displays date, clock, timer, number dialed or received and message waiting indication available from some services (See overleaf for more details).

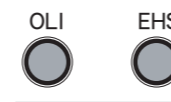
**STORE Key**

Press STORE to store a number and name in either the Direct Access Memory or Directory Memory. Any memory can store 32 digits for number and 16 characters for name. Storable digits: 0-9, \*, #, Pause, Recall and Handsfree commands.

**MEMORY Keys**

A total of 20 names and numbers can be stored via 10 Direct Access One-Touch and Two-Touch Memory Keys. Network facility codes may be programmed for ease of use. Upper row of 5 memory keys can be protected to prevent over-writing. To store, lift Handset, press STORE, press Memory Key, enter number, press STORE to confirm number, enter the name to store in the memory. See overleaf for more details.

**OLI & EHS Jacks**



**PAUSE Key**

Pause may be required if your phone is connected to any network where a momentary pause is needed during dialing. Lift Handset, dial any digits required before the pause, press PAUSE, and dial remaining digits. Pause is also storable in a memory.

**MUTE Key and Indicator**

Press to cut off transmission from the Handset, Headset and Handsfree microphones to allow user privacy. The red light indicates when the mute condition is activated. Press MUTE again to release the mute condition.

**HANDSFREE / HEADSET Key and Indicator**

Press HANDSFREE/HEADSET to activate the Handsfree mode or Headset mode. Headset mode will override Handsfree mode if a Headset has been connected to the Headset port. A red indicator will glow in either mode when the IQ750 is online. Press the key again to turn it off.

**Ringer Volume Switch (Hi/Low/Off)**

Selection of OFF (no sound), LOW volume, and HIGH volume of the telephone's ringing sound, which is located on the underside. When the switch is set to OFF, the ringing sound can still be heard via the Headset if the Headset is connected to the Headset port (headset optional extra).

**Ringer Pitch Control**

Rotate the control to adjust the Ringer Pitch. Located on the telephone's base.

**Volume Slider**

Adjusts the hearing level of the Handset Earpiece, Handsfree Speaker and Headset Earpiece. Set to midway for normal listening level. Located on the side of the telephone.

**Ringer/Message Waiting Indicator**

Flashes when the telephone rings with an incoming call. Built in Message Waiting suits both High Voltage (80 VDC), and Ericsson BP250 Message Waiting (other system types are optional extras).

**Cursor Keys (◀ and ▶)**

When storing a number and name into the Direct Access Memory or the Directory Memory, press Cursor ◀ or ▶ key to move forward or backward for editing. To enter a space, press Cursor ▶ (see overleaf for explanation on Date and Time set up and brightness adjustment).

**CLEAR Key**

Press twice to delete the record during record viewing in the Directory, Caller or Redial Memories.

**TIMER Key**

When a call is in progress, the word TIMER appears on the display, and the time will count from 00:00. The call duration will be displayed for 10 seconds after the call is terminated. See overleaf for more functions.

**RESET Key**

Press to reset the telephone to normal if the telephone appears to be malfunctioning. The memories will not be affected when this key is pressed.

**DIRECTORY Key**

Store up to 100 telephone numbers and names in the Directory Memory. Press to access the Directory Memories.

**CALLER Key with New Call Indicator and Message Waiting Indicator**

Press to review up to 80 incoming calls stored in the Caller Memory. The information stored includes Telephone number, Name, Date, Time and whether the call was answered or not. The red indicator will flash when a new call is received and will also flash to indicate Message Waiting for some types of services.

**Scroll Key (▲ and ▼)**

To review the Redial, Directory and the Caller memories, press the Scroll Key to scroll up or down the list.

**DIAL Key**

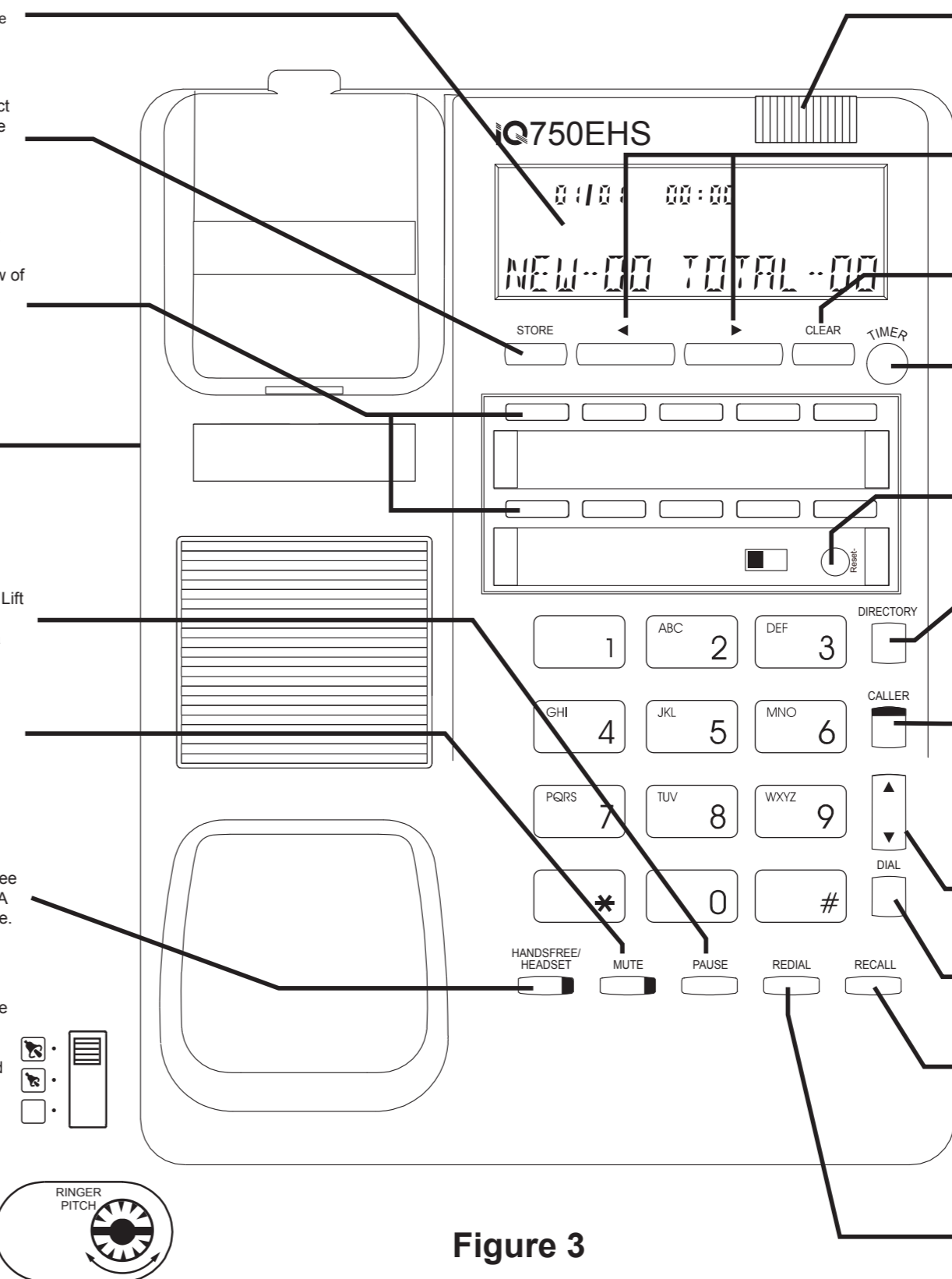
Press to dial any number selected in the Direct Access Memory, Caller Memory, Redial Memories or Directory Memory.

**RECALL Key**

For use with the host telephone system to invoke special network facilities such as Call Hold or Call Transfer which may be available in your PABX or network. See your telephone system user guide to learn how to use it. It may be called Flash or Facility Key. Recall timing is preset to 100mS and is user adjustable.

**REDIAL Key**

Press the key to redial the last number (max 32 digits), or direct redial of an unsuccessful number dialed without going off line. See overleaf for more functions.



**Figure 3**

Should you require further assistance, please email [enquiries@interquartz.com.au](mailto:enquiries@interquartz.com.au)